

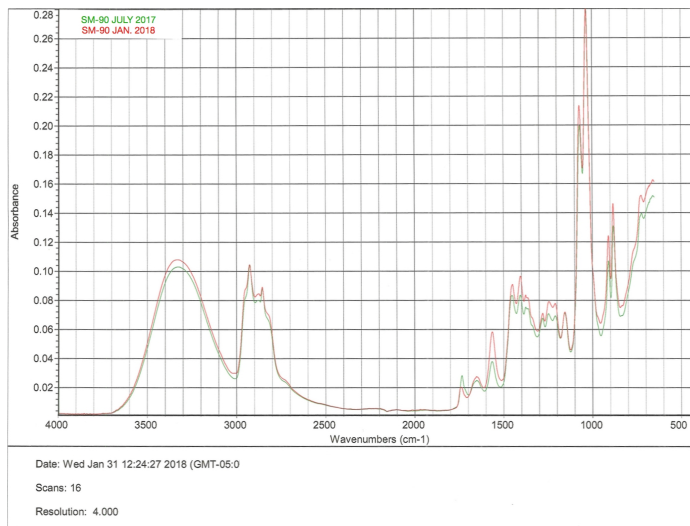


## SM-90: NOW COLD PROCESSED

Since its introduction years ago, SM-90 has been produced in small, open to air batches. This processing method gives off a great deal of heat and results in the essential oil ingredients being exposed to high temperatures during processing.

For a while now, we at Nutrilife have been looking to find a way to produce SM-90 in larger, closed vessel batches at lower temperatures in order to avoid any damage to, or denaturing of the delicate oils used in our product. **And now we have it.**

You may or may not notice a slight difference in the appearance of this Cold Processed SM90 versus the high temperature processing method.



Any difference is superficial only, and does not affect the efficacy of our product.

Using infrared spectroscopy, the lab results show a perfect match. Field tests yield improved results.

Expect the **Same Great Results** - or maybe even a little bit better - that you have come to enjoy from SM-90 over the years.

**We wish you continued growing success.**

**Any questions?**  
**info@nutrilifeproducts.com**  
**+1-877-533-9572**